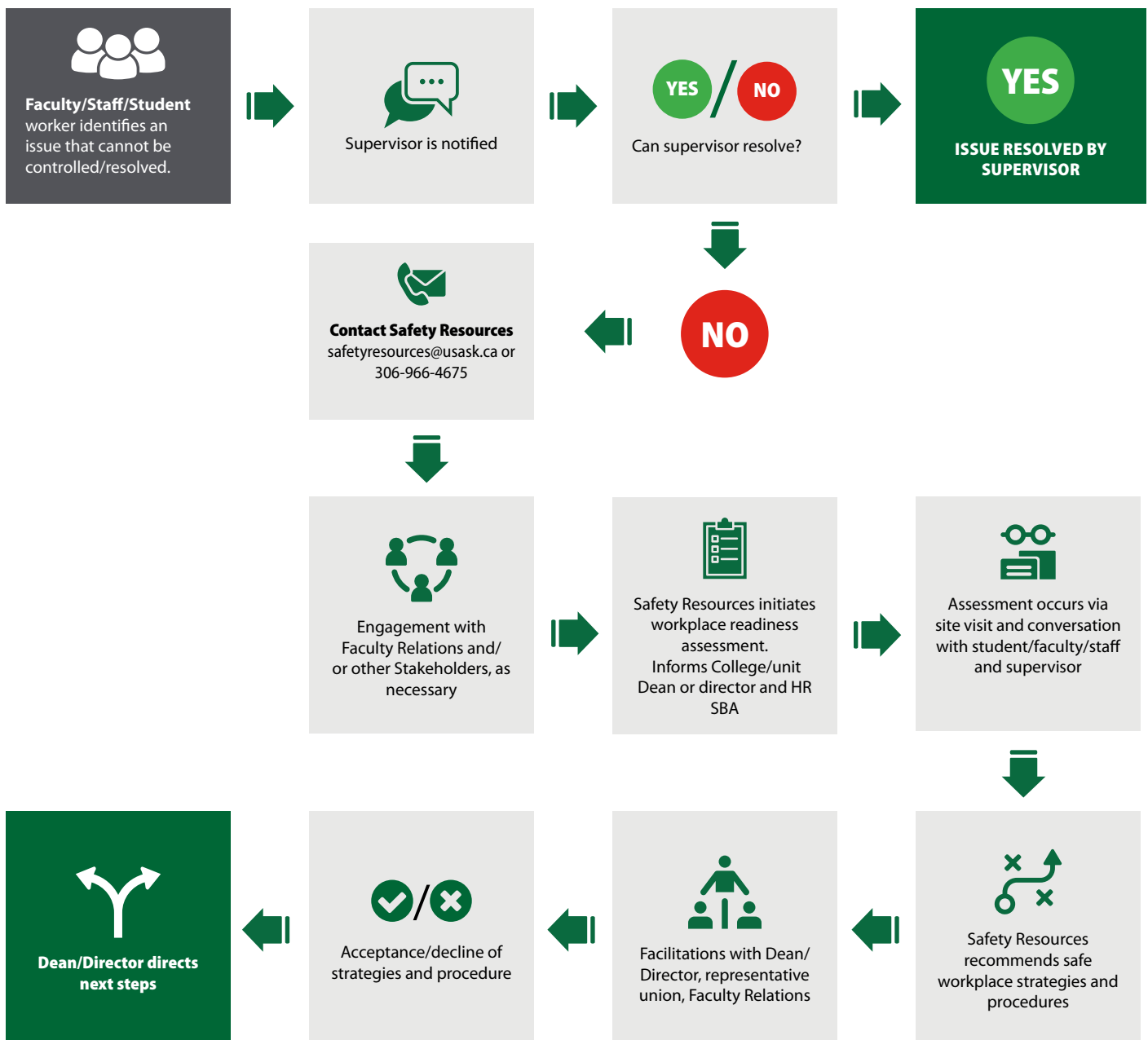


# COVID-19 GUIDELINES

# SAFE RETURN WORKPLACE ASSESSMENT PROCESS

As we continue to address the COVID-19 pandemic, our priority will remain focused on helping our students, faculty and staff maintain their health, safety, and dignity. There are several reasons why a student worker, faculty or staff member may be hesitant about or unable to return to work. To address concerns, USask utilizes an inclusive and communicative approach, known as the Safe Return Workplace Assessment. The following is a visual representation of what that process looks like.



If requesting this work assessment process, please initiate three weeks in advance of your return date to allow for stakeholder scheduling.

# WORKPLACE READINESS ASSESSMENT PROCESS

As we continue to address the COVID-19 pandemic, our priority will remain to help all persons maintain their health and safety. There are several reasons why a worker may be unwilling or unable to return to work. To address concerns, USask utilizes an inclusive and communicative approach, known as the Safe Return Workplace Assessment. The following is a visual representation of what this process looks like.

