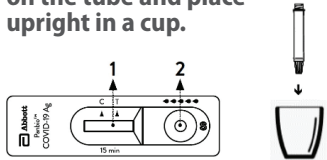


COVID-19 Rapid Self-Test Training Summary

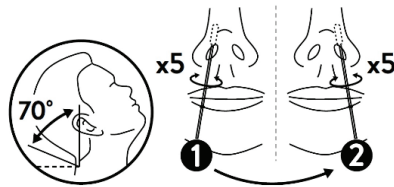
1 PREPARE YOUR MATERIALS:

Open the test device and place on a flat surface. Obtain the specimen tube and tap any droplets down. Break the seal and open the blue cap on the tube and place upright in a cup.



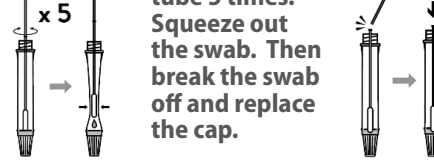
2 PERFORM THE SWAB:

Tilt head and perform the swab: Insert 2 cm and rotate 5 times in each nostril.



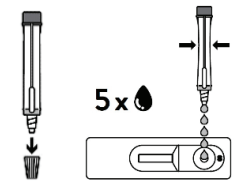
3 EXTRACT THE SAMPLE:

Transfer the sample from the swab into the tube of buffer solution by swirling and pushing the swab against the wall of the tube 5 times. Squeeze out the swab. Then break the swab off and replace the cap.



4 TEST DEVICE USE:

If there are bubbles, gently tap the tube. Break the seal and open the dropping nozzle cap and dispense 5 drops of solution onto the specimen well (S) of the test device.



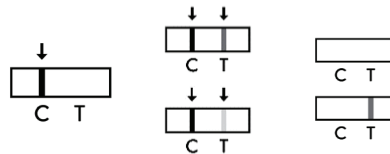
5 WAIT FOR RESULTS:

Start a timer and read the result at 15 minutes. Do not handle or move the device. Do not read the result after 20 minutes.



6 TEST INTERPRETATION:

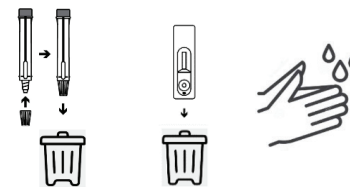
Negative Positive Invalid



If the test is invalid, take another test.

7 WASTE DISPOSAL:

Place the swab, capped tube and test device in the regular household garbage. Wash your hands with soap and water.



8 REPORT YOUR RESULTS IN PAWS:

In the Covid Testing/Symptom Check channel, find the COVID-19 Testing tab. Write the date on the test device and upload the picture. Follow the instructions provided through PAWS.

