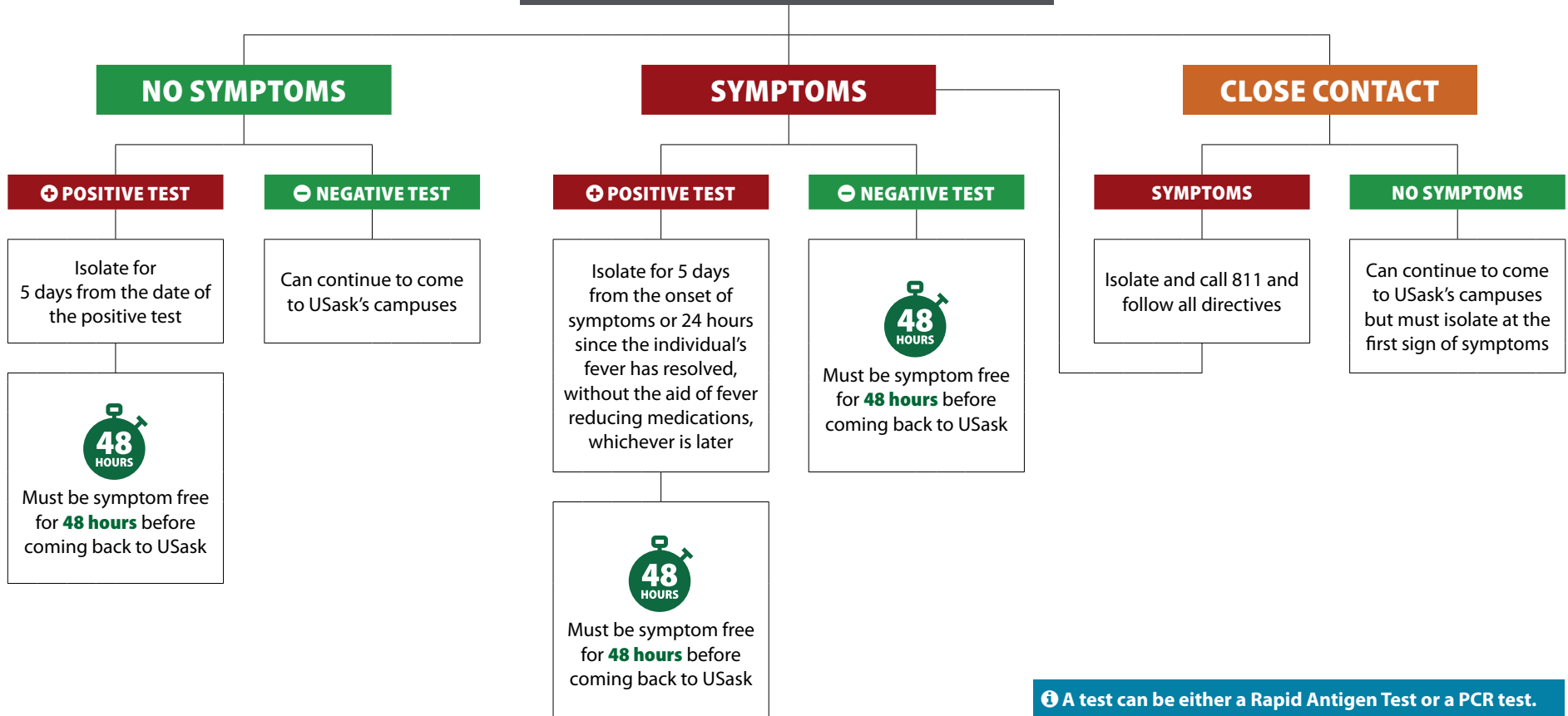


# COVID-19 GUIDELINES

# SUSPECTED CASE OR CLOSE CONTACT INFORMATION

## IF YOU ARE VACCINATED



**i** A test can be either a Rapid Antigen Test or a PCR test.

**SYMPTOMS:** Include fever, cough, headache, muscle and/or joint aches and pains, sore throat, chills, runny nose, nasal congestion, conjunctivitis, dizziness, fatigue, nausea/vomiting, diarrhea, loss of appetite, loss of sense of taste or smell, shortness of breath, difficulty breathing (new or worsening symptoms but not related to allergies).

**CLINICAL STUDENTS:** All vaccinated students participating in clinical rotations, placements, residency, etc. must follow the Saskatchewan Health Authority (SHA) "Health Care worker Return to Work Policy", including increased isolation requirements, seven days from the onset of symptoms or positive test. For more information on SHA changes to COVID-19 screening, positive cases, and close contacts, please contact your direct supervisor.

**Note:** subsequent negative tests do not reduce isolation requirements